

COMMUNITY PROFILE

The Village of Cereal is located along Highway 9 in southeastern Alberta in the Alberta's Special Areas. Named for the abundance of cereal crops that were grown in the area at the birth of the community, today, Cereal is a Canadian Badlands community. Over the last few years, a resurgence of development has added new employment and interest to this quiet community. With a historic downtown and a Prairie Pioneer Museum that tells the story of the depression days in the region and chronicles the life and times of early settlers in Canada's West, this Village is a history buff's dream.

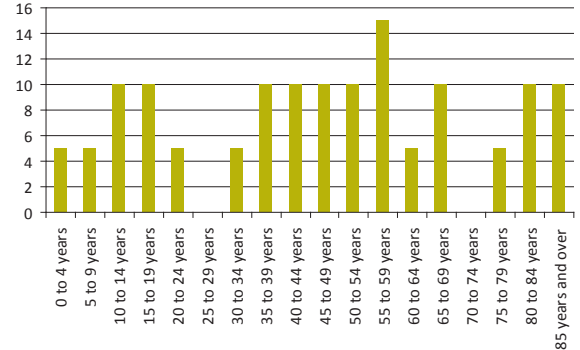
Geographic Information/ Access to Markets

Location: Located along Highway 9 in Special Areas No. 3
Elevation: 765 Meters, 2,510 Feet
Latitude: 51°24'56" N
Longitude: 110°47'59" W
Major Highways: Highway 9
Secondary Highways: Highway 41 and 886
Closest Airport: Oyen Municipal Airport

Population Information

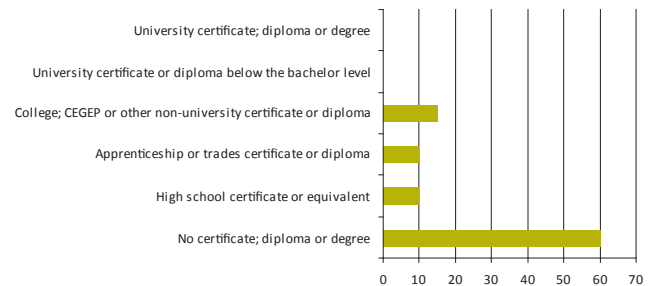
Population in 2006 126

Age by Population



Educational Attainment

Total Population 15 Years and Over (2006)

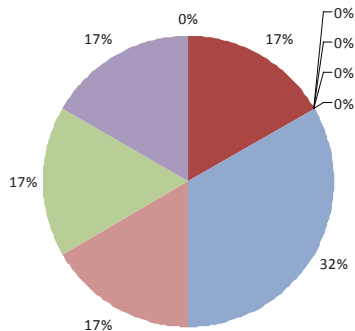


Labour Market Data (2006)

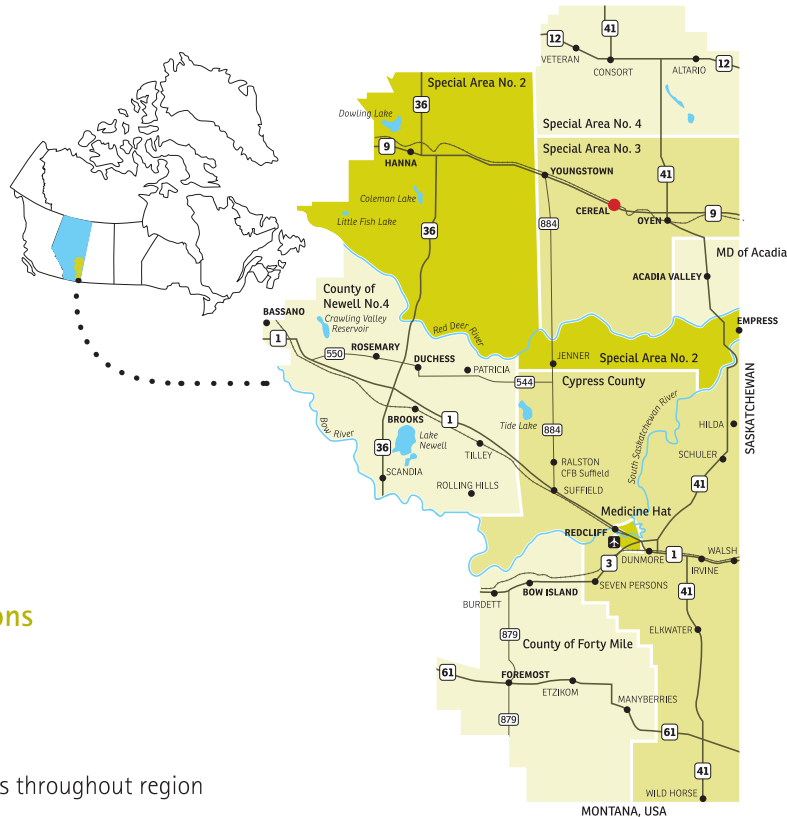
Total population 15 years and over	100	Not in the labour force	45
In the labour force	55	Participation rate	55
Employed	55	Employment rate	55
Unemployed	0	Unemployment rate	0



Labour Force By Industry (2006)



- Agriculture and other resource-based industries
- Construction
- Manufacturing
- Wholesale trade
- Retail trade
- Finance and real estate
- Health care and social services
- Educational services
- Business services
- Other services



Safety & Security

Police/RCMP:

Oyen RCMP Detachment

Ambulance, Fire, Rescue:

Cereal Volunteer Fire Department, Ambulance out of Oyen, 911 Service

Utilities & Services

Electric Power Providers:

Direct Energy

Natural Gas Providers:

Dry Country Gas Co-Op

Landfill/Waste Transfer:

Village of Cereal

Water:

Henry Kroeger Regional Water Commission

Water Source:

Red Deer River

Overnight Express Service:

DHL, Purolator, Hi-way 9 Express Ltd., Greyhound Canada, Canada Post

Financial Institutions

Alberta Treasury Branch Agency

Telecommunications

Telephone:

Telus

Internet:

High speed and wireless throughout region

Business Supports

Cereal Board of Trade, SAMDA Economic Partnership, Community Futures Meridian Region, Palliser Economic Partnership

Major Employers

Cando Oilfield Construction, Dry Plains Earthmoving Ltd., Cereal Hotel

Educational Facilities

Oyen Public School (K-9), Oyen South Central High School (10-12), Assumption Roman Catholic School (K-6)

Post-Secondary Institutions

College:

Medicine Hat College

University:

Athabasca University, University of Calgary

Hospital

Oyen Big Country Hospital

Print Media

Oyen Echo, Prairie Post, East Central Alberta Review

Library

Cereal Municipal Library (Marigold System)

Recreation Facilities

Arena, Curling Rink, Ball Diamonds (3), Rodeo Arena

Religious Facilities

Cereal United Church, Cereal Lutheran Church, Kingdom Hall of the Jehovah's Witnesses

*** All information included in this profile has been obtained from the community and Statistics Canada Census 2006.*

Palliser Economic Partnership

109, 346-3 St SE
Box 1046
Medicine Hat, AB, Canada T1A 7H1
P 403.526.7552 F 403.529.3140
TF 1.877.226.7552
www.palliseralberta.com



Village of Cereal

415 Main Street
Box 160
Cereal, AB, Canada T0J 0N0
P 403.326.3823 F 403.326.3826