

COMMUNITY PROFILE

Tilley is a quaint village nestled in the heart of a busy farming, ranching and oilfield community. Located 24 km east of Brooks on the Trans Canada Highway, Tilley is a bustling community with businesses on the tree-lined main street offering a variety of services. A range of recreational amenities and a variety of events throughout the year keep the residents of Tilley busy. Sportsmen know Tilley for the many great fishing spots and some of the best duck, goose and pheasant hunting in Alberta. Tilley is full of hospitality!

Geographic Information/ Access to Markets

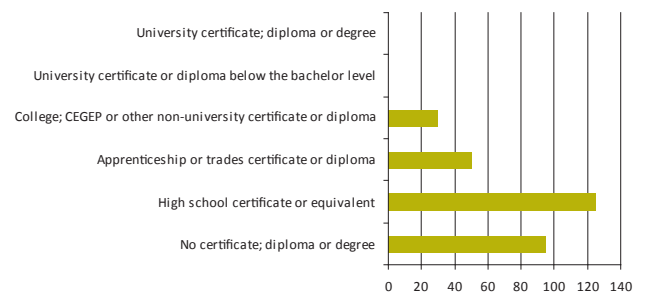
Location: Located in the County of Newell
Elevation: 760 Meters, 2,493 Feet
Latitude: 50°27'8" N
Longitude: 111°39'27" W
Major Highways: Trans Canada Highway (Hwy 1)
Secondary Highways: Highway 36 & 876
Closest Airport: Brooks Municipal Airport
Rail: Canadian Pacific Railway

Income

Median Household Income: \$46,533 (2005)
Median Family Income: \$46,406 (2005)

Educational Attainment

Total Population 15 Years and Over (2006)



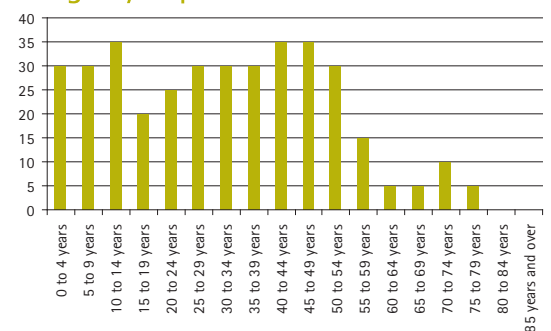
Labour Market Data (2006)

| | | | |
|------------------------------------|-----|-------------------------|------|
| Total population 15 years and over | 290 | Not in the labour force | 75 |
| In the labour force | 220 | Participation rate | 75.9 |
| Employed | 215 | Employment rate | 74.1 |
| Unemployed | 0 | Unemployment rate | 0 |

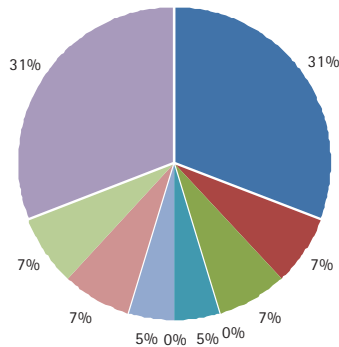
Population Information

Population in 2006 381

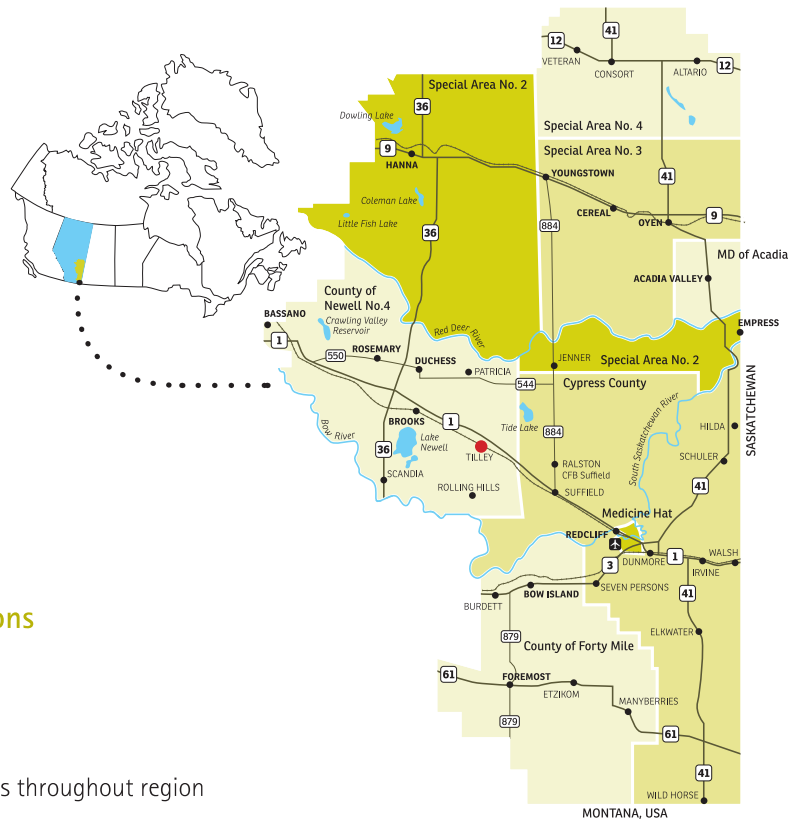
Age by Population



Labour Force By Industry (2006)



- Agriculture and other resource-based industries
- Construction
- Manufacturing
- Wholesale trade
- Retail trade
- Finance and real estate
- Health care and social services
- Educational services
- Business services
- Other services



Safety & Security

Police/RCMP:

RCMP Detachment in the Town of Brooks

Ambulance, Fire, Rescue:

Volunteer Fire Department, Ambulance Services available through Brooks, 911 Services

Utilities & Services

Electric Power Providers:

EPCOR

Natural Gas Providers:

Tirol Gas Co-Op Limited & Dinosaur Gas Co-Op Limited

Landfill/Waste Transfer:

Newell Regional Landfill

Water:

Newell Regional Service Corporation

Water Source:

Water is piped in from Brooks

Overnight Express Service:

Canada Post, Greyhound Canada, Purolator

Financial Institutions

Alberta Treasury Branch Agency

Telecommunications

Telephone:

Telus

Internet:

High speed and wireless throughout region

Business Supports

Community Futures Entre-Corp, Palliser Economic Partnership

Major Employers

Burton Custom Applications Ltd., Wester's Garage, Tilley Hotel, Alberta Treasury Branch Agency, Tilley Restaurant

Educational Facilities

Tilley School (K-9), Tilley Mennonite School

Post-Secondary Institutions

College:

Medicine Hat College Brooks Campus

University:

University of Calgary, University of Lethbridge

Hospital

Brooks Health Centre and Medicine Hat Regional Hospital

Print Media

The Bassano Times, Brooks & County Chronicle, Brooks Bulletin, Medicine Hat News

Library

Tilley & District Municipal Library

Recreation Facilities

Parks, Playground, Ball Diamonds, Arena, Curling Rink, Community Hall, RV Campground

Religious Facilities

Bethany Lutheran Church, Tilley Mennonite Church

*** All information included in this profile has been obtained from the community and Statistics Canada Census 2006.*

Palliser Economic Partnership

109, 346-3 St SE
Box 1046
Medicine Hat, AB, Canada T1A 7H1
P 403.526.7552 F 403.529.3140
TF 1.877.226.7552
www.palliseralberta.com



Village of Tilley

Municipal Office
144 Centre Street
Tilley, AB, Canada T0J 3K0
P 403.377.2203 F 403.377.2234