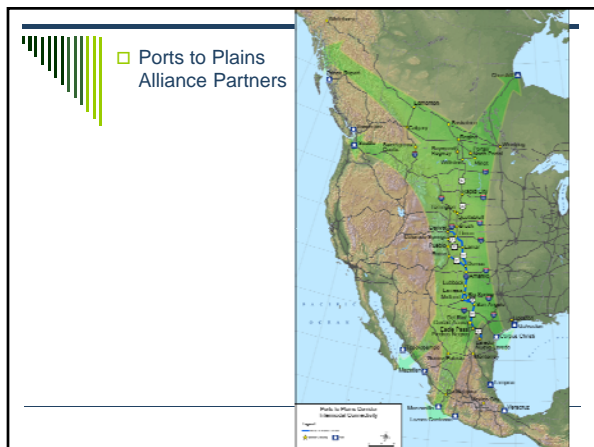
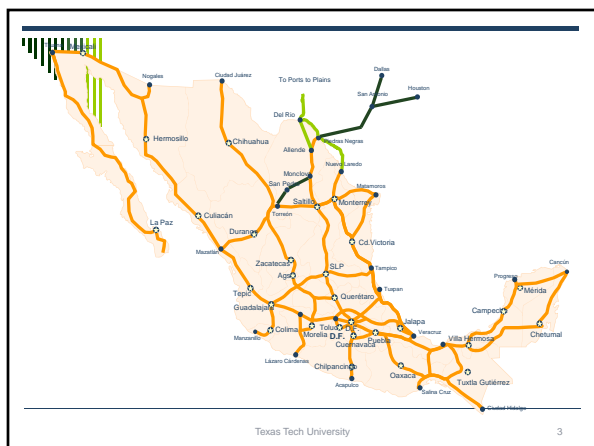




PORTS-TO-PLAINS
ALLIANCE
Securing the Benefits of Commerce to
North America's Energy & Agriculture Heartland

Michael Reeves
President
Ports-to-Plains Alliance






Ports to Plains Benefits

- Economic development to rural areas of North America
- Infrastructure to improve commerce, particularly agriculture and energy industries
- Improved highway safety
- Education and research exchanges


Safety

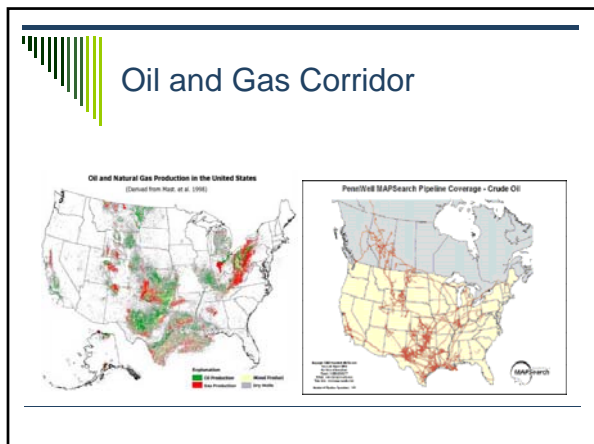
- Rural fatality rates 2.5 times higher than urban roadways
- Completion of PTP projected to reduce accidents by the following rates:
 - Texas – 47%
 - Oklahoma – 44%
 - New Mexico – 33%
 - Colorado – 28%



Ports to Plains Eastern Alberta Corridor

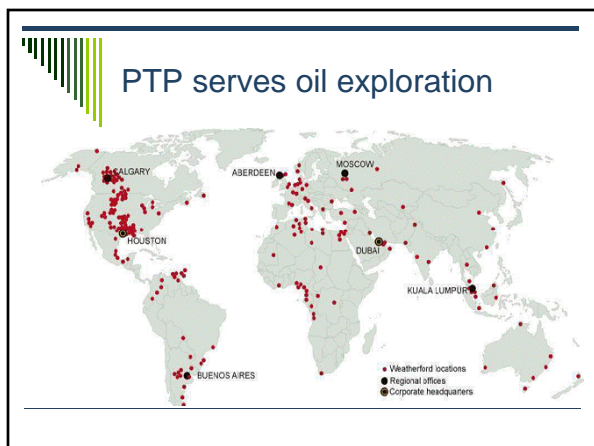
- Rural economic development
- Less congested alternative to other highways and border crossings

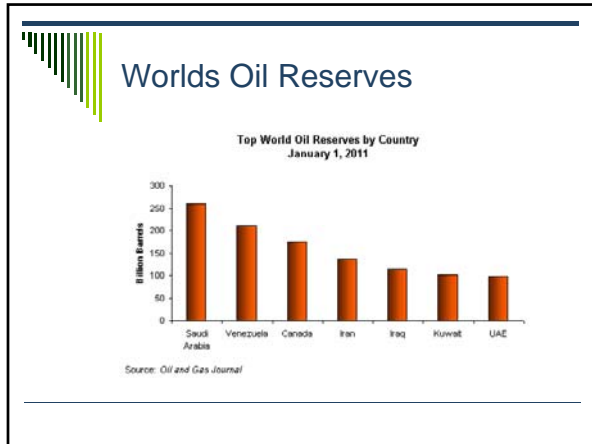




ConocoPhillips in Ports to Plains States

- 16,000 employees
- Approximately \$2.8 billion in royalties and taxes paid to Provincial, State and Local governments
- 82 million barrels of oil produced annually
- Almost 1.5 trillion cubic feet of natural gas production annually
- 4 refineries
- 7800 miles of pipeline










PTP serves oil exploration

Ports to Plains is logical route for trade between Alberta, Texas and Mexico



Transportation key to development

Megaloads of heavy equipment are essential to development of oil sands projects



Rig Related Movements Per Well

Item	Number of Trucks	Inbound/Outbound
Sand	80	Inbound
Water (fresh)	400	Inbound
Water (Waste)	200	Outbound
Frac Tanks	100	Both
Rig Equipment	50	Both
Drilling Mud	50	Inbound
Chemical	4	Inbound
Cement	15	Inbound
Pipe	10	Inbound
Scoria/Gravel	80	Inbound
Fuel Trucks	7	Inbound
Frac/cement pumper trucks	15	Inbound
Workover Rigs	1	Inbound
Total – One Direction	1,012	
Total Trucks	2,024	

Truck Transportation Math Snapshot

Truck Transportation	Loads per year
Rig Movements	3,036,000
Sand	112,500
Oil	365,000
Production Water	584,000
Total	4,097,500
Loads per day	11,226

Protesters using transportation to block oil sands development



Keystone XL Pipeline



- Important for oil sands development
- PTP mayors sent letter of support

Source: TransCanada By Janet Loehke, USA TODAY

Wind Power Corridor

UNITED STATES ANNUAL AVERAGE WIND POWER

Transportation Costs Factor into Manufacturing Decisions

- Large size of materials mean greater shipping cost
- 1.5 mw blade - \$7 per mile shipping cost
- 2 mw blade - \$15 per mile shipping cost
- Advantage to locate manufacturing facilities near wind farm sites

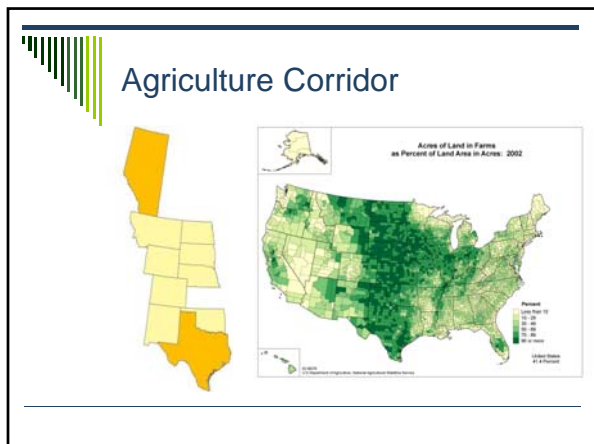
Infrastructure Demands

- 8-10 permitted and escorted loads per tower
- 5 regular loads per tower
- 13 to 15 total truck loads per wind tower
- 4000 MW farm with 2667 towers would require up to 40,005 trucks and 53,340 pilot cars

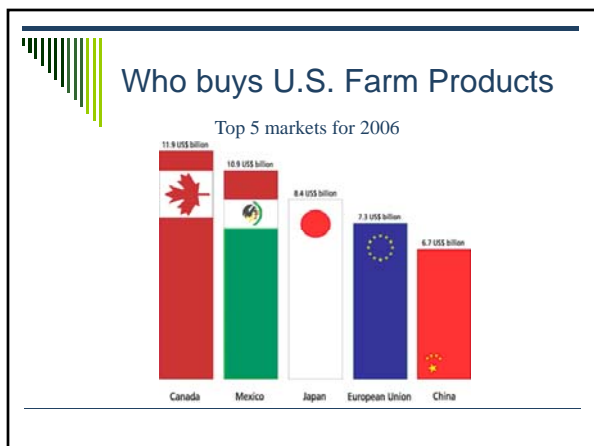
















Federal Advocacy Efforts

- Highway funding bill
 - Possible vehicle for environmental issues
 - Pilot program for freight and oversize loads
- Cross border issues
 - Wild Horse crossing
 - Trade issues
- Forums for education on agriculture and energy issues



Ports to Plains Corridor Coalition

Michael Reeves
5401 N. MLK #395
Lubbock, TX 79403
(806) 775-2338
www.portstoplains.com
michael.reeves@portstoplains.com
