

FINDING

Work at ...

Informing
Attracting
Developing
Retaining



MEDICINE HAT NEW HOLLAND

Company Background

Established in 1994, Medicine Hat New Holland is a full-line New Holland dealer. The company provides equipment and service to agricultural and light industrial customers in Medicine Hat and area. In 1995, Brooks New Holland, a subsidiary company, opened its doors providing equipment and service to Brooks and area.



Medicine Hat New Holland provides:

- New and used light industrial equipment.
- New and used farm equipment.
- Parts for both agricultural and light industrial equipment.
- Repairs for both agricultural and light industrial equipment.
- Products and advice on technological devices such as GPS, Auto-steering, and Auto-controls.

Between the Brooks and Medicine Hat dealerships, there are currently 19 full time positions.

Types & Nature of Work

Medicine Hat and Brooks New Holland employ the following positions:

Equipment Sales Positions:

- Involves with customer interaction and advice, equipment demonstrations, and travel to customers' farms and businesses.

Parts Positions:

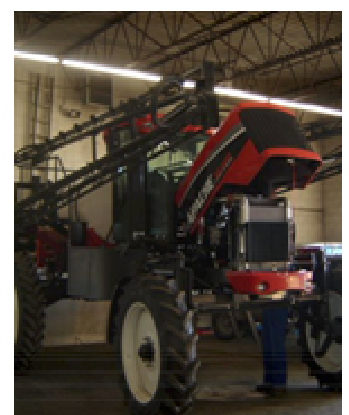
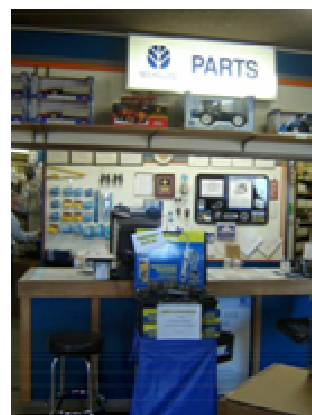
- Involves interacting with customers and internal staff, managing inventory, shipping and receiving, sales and dealer promotion.

Mechanics:

- Includes Heavy-Duty Mechanics and Agricultural Mechanics (journeyman and apprentice positions).
- Involves work on both agricultural and light industrial equipment, mostly indoor work with some occasional field repair work.

Administrative Positions:

- May involve reception (telephone and in-person), payroll, word processing, data entry, accounts receivable and accounts payable.





Ideal Candidate Qualifications

Ideal qualifications include:

- Grade 12 education.
- Clean Driver's Abstract.
- Must be bondable.
- Able to work independently.
- Positive attitude.
- Reliable.
- Understanding of the agriculture industry (particularly for sales positions).



Training Opportunities

Sales, parts, and service employees receive extensive on-the-job training on product knowledge, specialized New Holland equipment training, and training by peers.

Apprentice opportunities are available for all trade positions. There are also various external training sessions offered by industry associations.

Hours, Pay, Benefits

Most positions are full time. Some part time positions exist.

Employees work year round with occasional overtime available.

Hours of operation are Monday to Friday are 8:00 a.m. to 5:00 p.m. The Parts Department is also open Saturdays 8:00 a.m. to 12:00 p.m.

A benefit package is available after a 90-day probationary period.

How to Apply

The preferred method of application is submitting a personal resume by email.

Applicants can also apply in person (by appointment), mail, or fax.

Depending on the position, resumes are reviewed when received. An initial interview is then conducted followed by reference and background check. If satisfactory, a second interview is conducted. If successful, the candidate is offered employment.

Contact Information

Medicine Hat New Holland Ltd
1625 30th St SW
Medicine Hat, AB T1B 3N5

Phone: (403) 528-2800 or 1-800-739-8810

Fax: (403) 528-3372

Email: ghalderman@medhatnh.com

Website: www.medhatnh.com